

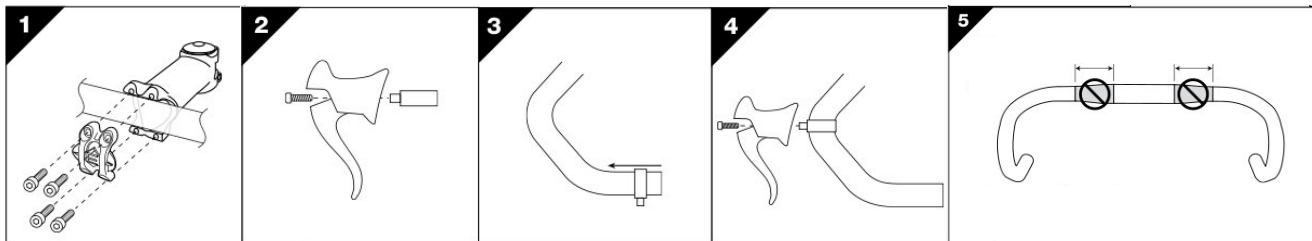


INSTALLATION GUIDE

Williams Handlebars

Please read the following instructions. Williams recommends that the handlebars be installed using a torque wrench, by a qualified mechanic.

Please read the following Warnings. Because the failure to follow any warning may result in a catastrophic failure of the handlebars, resulting in serious personal injury or death, this phrase may not be repeated in connection with each warning.



CAUTION!

Williams handlebars are designed for use only with 31.8mm stems. Williams recommends using only Williams bar / Williams stem combinations. If installing Williams components in conjunction with another manufacturer's components, always follow that manufacturer's instructions for proper installation procedure. WILLIAMS ASSUMES NO LIABILITY FOR DAMAGE CAUSED BY INSTALLING OTHER MANUFACTURERS' PRODUCTS.

Clean the handlebar and stem clamp surfaces with alcohol, and allow to dry.

For carbon handlebars, apply carbon friction paste to the stem handlebar clamp and handlebar clamping surface.

Install the Williams handlebar centered in the stem clamp and rotate as desired.

Torque the stem handlebar clamp bolts as specified by the stem manufacturer.

Inspect the shifter and brake control lever clamp surfaces for burrs or sharp edges. Remove any burrs or sharp edges with 320/400 grit sandpaper.

Thoroughly clean the control lever clamp surfaces with alcohol, and allow to dry.

When installing road control levers, remove the clamp from the lever; then carefully slide the clamp over the bar and into position, making sure that you do not scratch the handlebar. Loosely re-attach the lever to the clamp (Figures 2, 3 and 4)

Do not clamp ANYTHING (Lights, racks, bags, aero bars, computers, etc.) on a bar tape. (Figure 5)

Check the position of the control lever and adjust as necessary. Tighten the control lever clamp bolt(s) according to the component manufacturer's instructions.